

# LEAP

POINT OF SALE SOFTWARE

Powered by LEOPARD

# CONTENTS

TITLES	PAGE NO
1. What is LEAP Point Of Sale_____	1
2. Features of LEAP_____	2-3
3. Types of environment LEAP works in_____	4
4. Devices LEAP work on_____	5
5. Back office_____	6
6. Examples of Cash Sales screen_____	7
7. Examples of Tabs_____	8
8. Payments & Payment types_____	9
9. Dashboard for active tables_____	10
10. Receipts / Cash Sale slips_____	11
11. Back Office features_____	12-15
12. Benefits of LEAP_____	16

# 1. WHAT IS LEAP POINT OF SALE?

- ▶ Is a Point of sale Software that is digitized and allows business owners to track financial transactions of the store for example
  - ▶ Sale of items,
  - ▶ Accepts payments and provides receipts
  - ▶ Cash flow,
  - ▶ Food inventory etc.
  - ▶ Help simplify your bookkeeping enormously depending on the package the customer takes.
- ▶ Built to switch over and manipulate itself to work with any type of Business.

## 2. FEATURES

- ▶ Point of sale
- ▶ Back office
- ▶ Invoicing modules
- ▶ Kitchen integrations
- ▶ Restaurant active tables
- ▶ Bars have high risk order tab warnings, Stock control - PLU code
- ▶ Fuel integrations for Petrol stations and Shipping companies etc...
- ▶ LEAP also works with staff clocking systems - sales inventory modules - CCTV systems, Networking - display screens and a lot more features.

## 2. FEATURES

- ▶ Capture of sales
- ▶ Capture of new Stock
- ▶ PLU codes
- ▶ Waiter features such as tabs, tips etc
- ▶ X reading can be done anytime of the day.
- ▶ Z reading at the end of the day.
- ▶ Can print out x and z readings on the system only
- ▶ System handles the daily and monthly accounts.
- ▶ Stock control and Stock take, Low stock alert, reporting stock movements etc.
- ▶ Daily profits and loss
- ▶ Sales analysis report
- ▶ Cash control
- ▶ Re-order levels
- ▶ GRV Functionality (Goods received voucher)
- ▶ Bar code scanning.
- ▶ Clear monthly inventory
- ▶ Local Till slip printing
- ▶ Sending of emails from the POS system
- ▶ For remote printing - If the Back office needs to be accessed via another point at the business
- ▶ Using an online store integrated to the POS systems
- ▶ Automatic Updates - Requires internet connectivity

# 3. TYPES OF ENVIRONMENT THE SYSTEM WORKS IN

- ▶ Works in Restaurants,
- ▶ Bars,
- ▶ Nightclubs,
- ▶ Taverns,
- ▶ Wholesalers,
- ▶ Pet Stores,
- ▶ Convenience Stores,
- ▶ Cellphone Stores,
- ▶ Salons,
- ▶ Spaza Shops,
- ▶ Fisheries,
- ▶ Hardware Stores,
- ▶ Supermarkets,
- ▶ Tuck-Shops,
- ▶ Butchery,
- ▶ Kitchens,
- ▶ Book Stores,
- ▶ Department Stores,
- ▶ and many more.

## 4. DEVICES THE SYSTEM WORKS ON

- ▶ Suitable for all windows such as
  - ▶ POS machines,
  - ▶ Notebooks,
  - ▶ Laptops,
  - ▶ Desktops,
  - ▶ Windows based tablet etc...
  - ▶ Soon to be on mobile phones

# 5. BACK OFFICE

- ▶ Can be installed on a separate machine for e.g., Owners / Manager who does the accounts for the business at home or out of the business premises.
  - ▶ Back office operations include processes used by employees that help keep the business running.
  - ▶ Can be manual or automated
- ▶ Day to day back office + Monthly Back Office functionality - Reporting stock movements - \*Re-order levels etc.
- ▶ Stock Control - Stock take - Capture New Stock - GRV Functionality (Goods received voucher)- monthly profits and loss - Clear monthly inventory - Cash control - Low stock alert
- ▶ Remote VPN access allowed.
- ▶ No equipment included.



# 6. EXAMPLE OF CASH SALES SCREEN

Allows the user to cash in any items with the touch of a finger on the screen or mouse on the system that is being purchased by the customer.

The screenshot displays the 'CASH SALE' interface. At the top, there is a table header with columns for 'Qty', 'Description', and 'Amount'. Below this is a grid of 30 green buttons, each representing a different product category. The categories are arranged in 6 rows and 5 columns:

admin	Annual License Software Rights	BAR	CANCEL LATION	CCTV
CHRISTIAN WEDDING	Christmas	Data Recovery	Diagnostic report	DISCOUNT
Events	FUND RECEIVED	HARDWARE	Hardware	Installation
IT Support	KITCHEN	LABOUR	LEAP	LEAP DEMO
LEOPARD	LEOPARD LEAP	LESS FUNDS PAID	MOBILE	PAID
PHOTOBOOK	PHOTOGRAPHY	PRE-WEDDING EVENT	Projector Services	SOFTWARE

On the right side of the screen, there is a vertical sidebar containing several navigation icons: an upward arrow, a downward arrow, a house icon, a folder icon, a group of three people icons, a trash can icon, and a stack of money icon. At the bottom of the screen, the 'LEAP POINT OF SALE powered by Leopard' logo is centered. To the right of the logo, the text 'Counter Sales' is displayed above the time '09 42' and the total amount 'R 0.00'. At the bottom left, there is a status bar with the following information: 'Processing Day: 2024-02-27', 'Session ID: 22105', and 'Cashier: Admin [1]'.

# 7. EXAMPLE OF CASH SALES & TABS

- Cashier chooses items to be sold and cashes
- Tables numbers can be chosen
- If Waiter / Waitress is serving more than one table they can choose tabs.

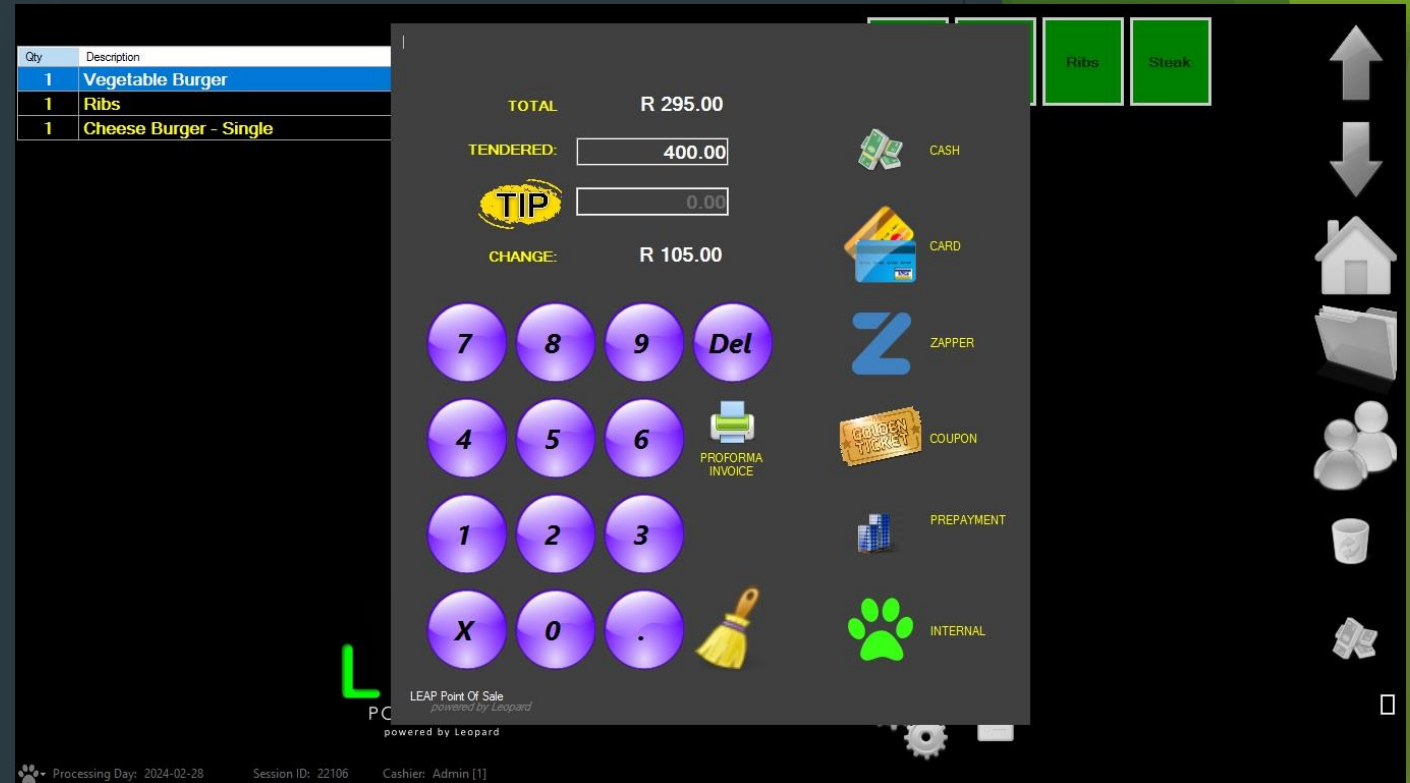
The screenshot displays the LEAP Point Of Sale interface. At the top, a 'CASH SALE' window shows a list of items with their quantities and amounts:

Qty	Description	Amount
1	Vegetable Burger	45.00
1	Ribs	200.00
1	Cheese Burger - Single	50.00
1	Steak	200.00
1	Cream Soda	25.00
1	Chocolate Milkshake	40.00

Below the list, a 'Speedy 1-Click Tab Names' overlay is visible, featuring a text input field with 'Amy' and a grid of buttons labeled 'Tab 1' through 'Tab 8', 'X', and 'Ok'. The background interface includes a top navigation bar with buttons for 'Chocolate Milkshake', 'Cake 300ml', 'Cream Soda', 'Oreo Milkshake', and 'Strawberry Milkshake'. The bottom right corner shows 'Counter Sales' as 'R 560.00' and the time '13:08'. The LEAP logo is also present.

# 8. PAYMENTS - PAYMENTS TYPES

- Total amounts / tips are automatically selected by the software.
- LEAP allows all types of payments options (Cash, Card via all types of card machines, Zapper, Coupons, Prepayments, split payments etc.)



# 9. DASHBOARD FOR ACTIVE TABLES



- Table awaiting features shows how long each table has been waiting for their order. Colors indicate the status
- **Green** - Just ordered and in safe time
- **Yellow** - Customer awaiting for more than a expected amount of time
- **Red** - Customer has been waiting longer than the expected time of serving.

# 10. RECEIPTS / CASH SALES SLIP

Receipt printed by the cashier. Includes all details

- Cashiers name
- Date of sale
- Items purchased
- Total
- Tip amount
- Change amount
- Details of business etc.

**LEOPARD GROUP**  
No2 Ncondo Place, Ridgeside Drive  
Umhlanga Ridge, Durban, KZN , South Africa  
Telephone:  
Email: accounts@leopardgroup.co.za

---

**Invoice**

Date: 2024-02-28  
Invoice No.: 1LEAPINV000489  
Account: CASH  
Cashier: Admin Till: L-SRV-03  
Waitron: Cashier Table:

<u>Description</u>	<u>Qty</u>	<u>Total</u>
Vegetable Burger	1.00	45.00
Ribs	1.00	200.00
Cheese Burger - Single	1.00	50.00
<hr/>		
Total (Excl)		295.00
VAT		0.00
Rounding		0.00
<b>Total (Incl)</b>		<b>R 295.00</b>
<hr/>		
TIP		105.00
CARD		400.00
Change		0.00

---

**Thank you for your support.  
Please call again.**

---

LEAP Point Of Sale 231061 14:35:33  
Powered by Leopard

# 11. BACK OFFICE FEATURES

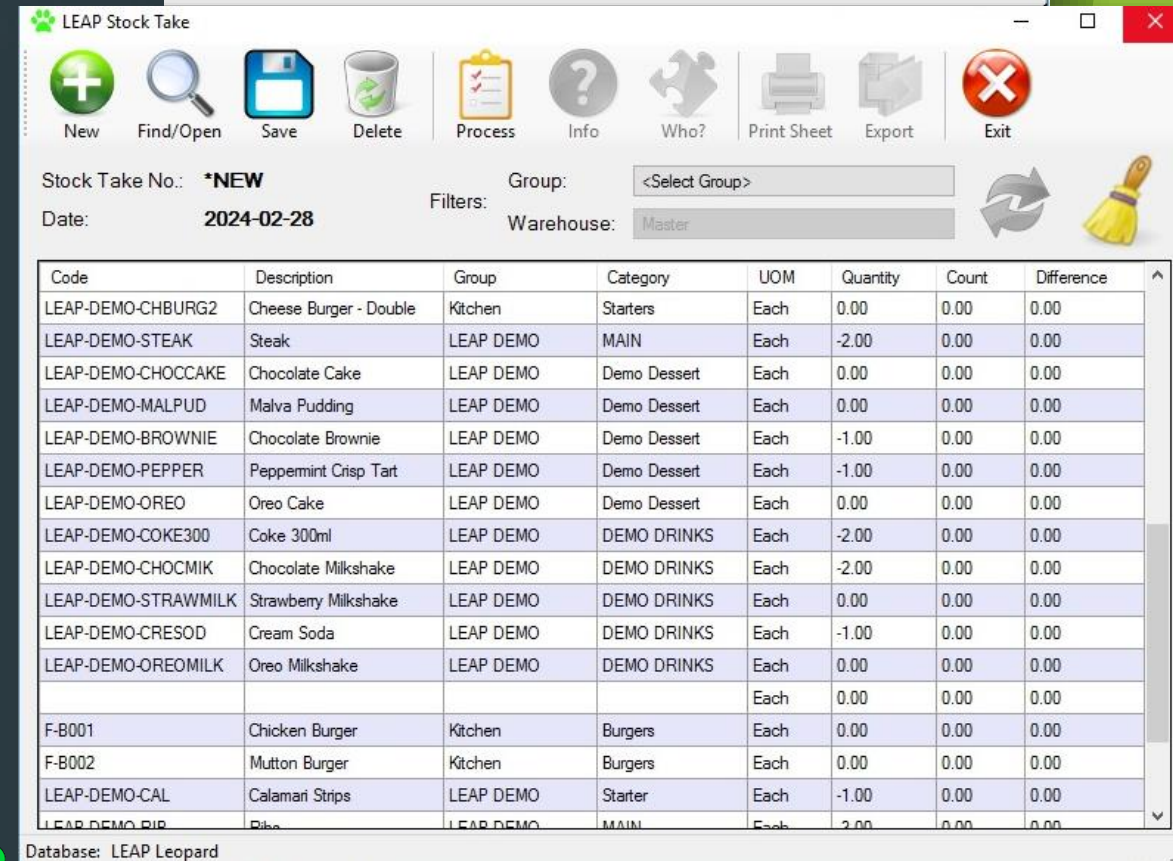
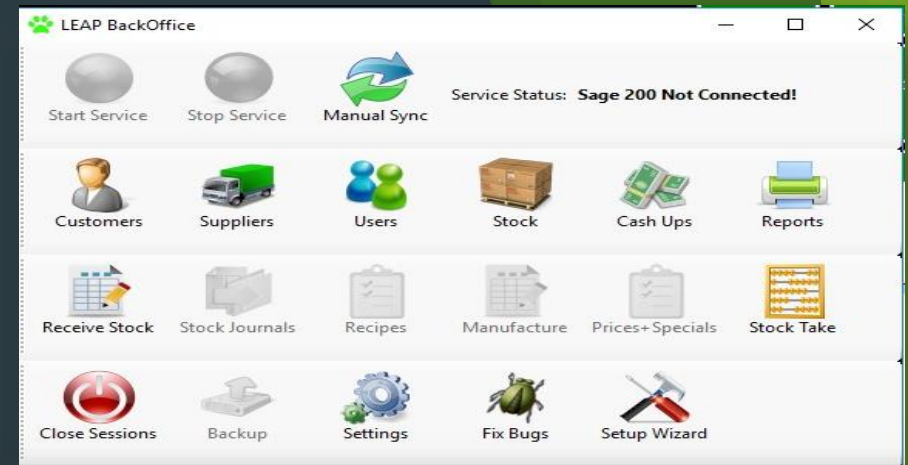
ALL FEATURES FOR BACK OFFICE THAT IS NEEDED BY A CUSTOMER IS ON LEAP POINT OF SALE.

- Add / receive stock
- Reprint invoice / receipts
- X / Z readings
- Cashiers only have certain access as per supervisor / admin permissions
- Supervisor / admin pins are needed for back office



# 11. BACK OFFICE FEATURES

- Admin / management has access to enter stock in groups, categories etc.
- Reports can be printed
- Stock take features
- Bug fixes can be done from the software instead of calling a support team to assist and pay extra costs.
- While the cashier is in front cashing, admin staff can enter stock received into the company on the system with any interference with the cashiers till.
- Stock take features



# 11. BACK OFFICE FEATURES

- Admin can add users and select type of access needed per staff member as per their duty / job description





# 11. BACK OFFICE FEATURES

- Cash ups show how many sales at the end of the day or end of the month
- Shows the total cash ups
- Shows difference in cash ups

LEAP Cash Ups

From Date: 2024-02-01 to: 2024-02-28  Show Only Open Sessions

SessionID	Day	Till	Open	From	To	Cashed Up	X Reading	Action	Expected	Z
22102	2024-02-26	L-SRV-03		12:00	12:20		X Reading	Cash Up	0.00	0.00
22103	2024-02-26	L-SRV-03		12:51	14:11		X Reading	Cash Up	0.00	0.00
22104	2024-02-26	L-SRV-03		14:26			X Reading	Cash Up	315.00	0.00
22105	2024-02-27	L-SRV-03		10:06			X Reading	Cash Up	560.00	0.00
22106	2024-02-28	L-SRV-03		13:18			X Reading	Cash Up	1 205.00	0.00

8  Show Only Open Sessions

	Cashed Up	X Reading	Action	Expected	Z	Diff. in CashUp
12:20		X Reading	Cash Up	0.00	0.00	0.00
14:11		X Reading	Cash Up	0.00	0.00	0.00
		X Reading	Cash Up	315.00	0.00	0.00
		X Reading	Cash Up	560.00	0.00	0.00
		X Reading	Cash Up	1 205.00	0.00	0.00

# 12. BENEFITS OF LEAP POS

- Integrates with Sage
- Offline solution as well for Sage
- Affordable point of sale
- Eliminates human errors and save money in the long term
- Can be used by any industry from small to big
- Can be used on touch and normal screens
- Faster, easier and cheaper to install,
- Quicker payments, faster from authorizing a credit card transaction to printing a customer receipt
- Faster scanning of items
- No more chance for loss of income or mistake happens
- Provides faster service than a traditional cash register
- Accurate record of daily transactions and report about the volume of the stock
- Easy training
- Dark mode protects screen and health issues by sight
- Intuitive Dashboards
- No need for expensive equipment
- Any many more..

**LEOPARD** Group

SOFTWARE DEVELOPING COMPANY

# Thank You

---

[sales@leopardgroup.org.za](mailto:sales@leopardgroup.org.za)

+2781 559 0989

<https://leopardgroup.org.za>

OFFICIALLY A SAGE ISV PARTNER

<https://za-marketplace.sage.com/en-za/apps/120984/leap-point-of-sale>

Link to the Leap video:

[https://leopardgroup.org.za/software/leap/pos/leap\\_pos\\_video.mp4](https://leopardgroup.org.za/software/leap/pos/leap_pos_video.mp4)

sage

| ISV Partner

Sage LEAP  
POINT OF SALE SOFTWARE